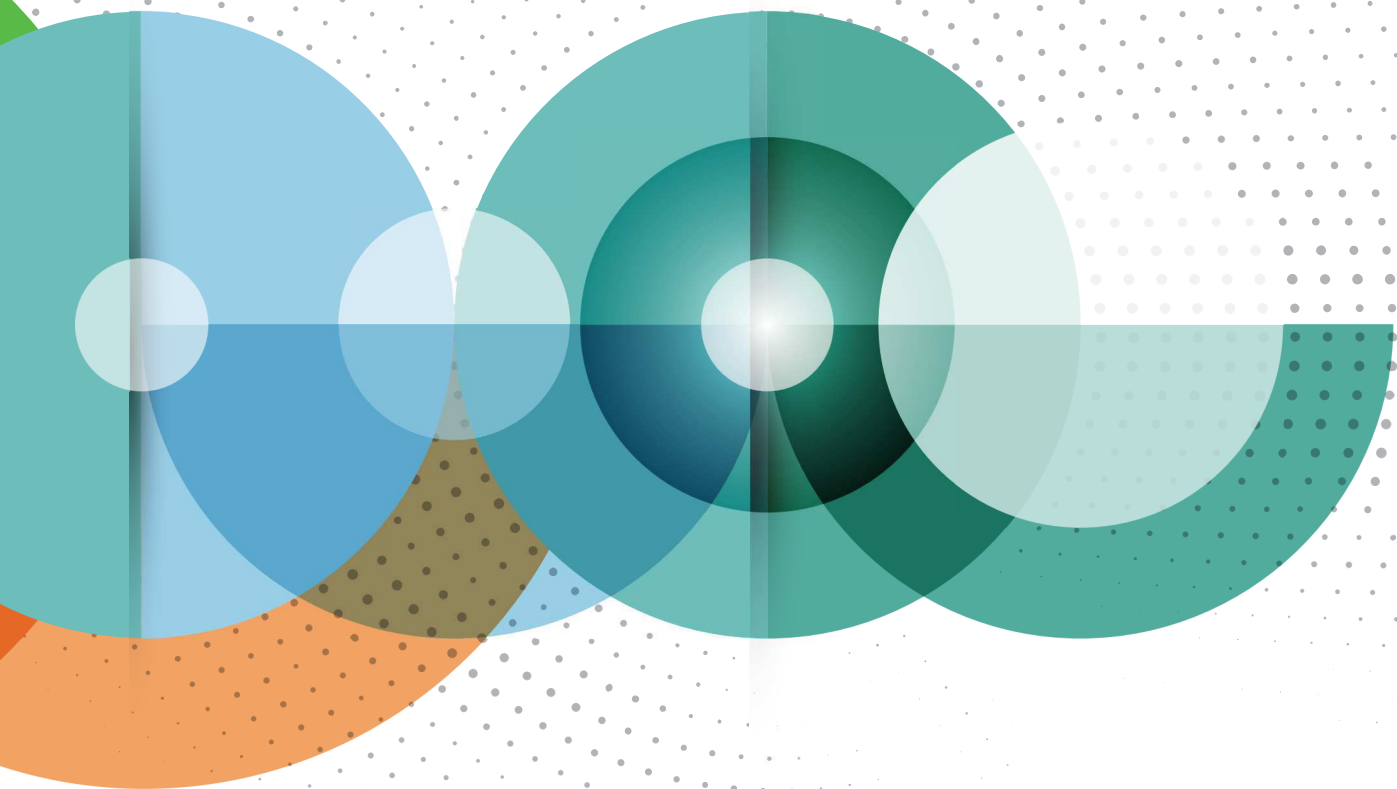


**Techpia provides excellent products
with the best facilities and technology**



TECHPIA



Techpia Global's motto is
"The right guide for making the right choice."

"From the raw material already used in production, we know what is best and what is better."

Techpia Global is a Korean window tint film maker with state-of-the-art facilities.

As a manufacturer, we provide all kinds of window films with better service and warranty.

You can reliably deliver great products directly to customers around the world.

Overview

Company name: Techpia

CEO: Mr. Jung

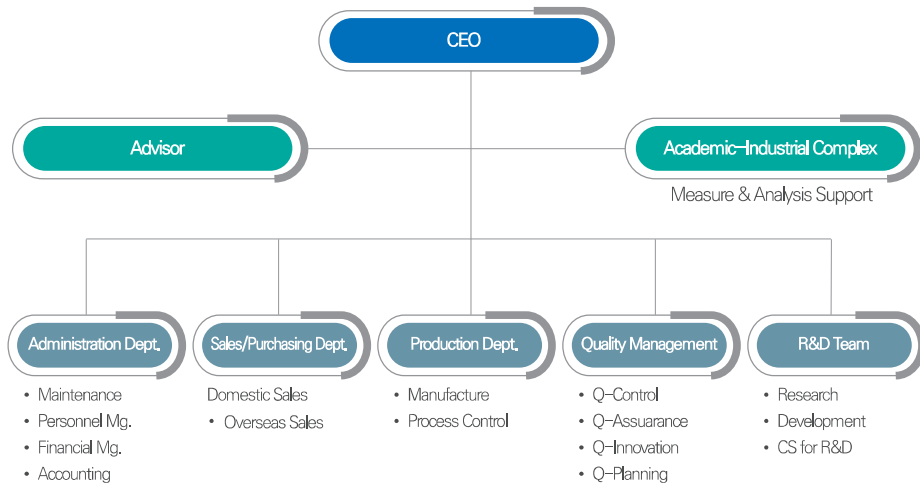
Establishment date: January 7, 2007

Business Areas: Window Film, PPF, Functional Tape, Deco Film

Certification status: ISO 9001 / ISO 14001

10 patents (7 patents registered / 3 patents applied)

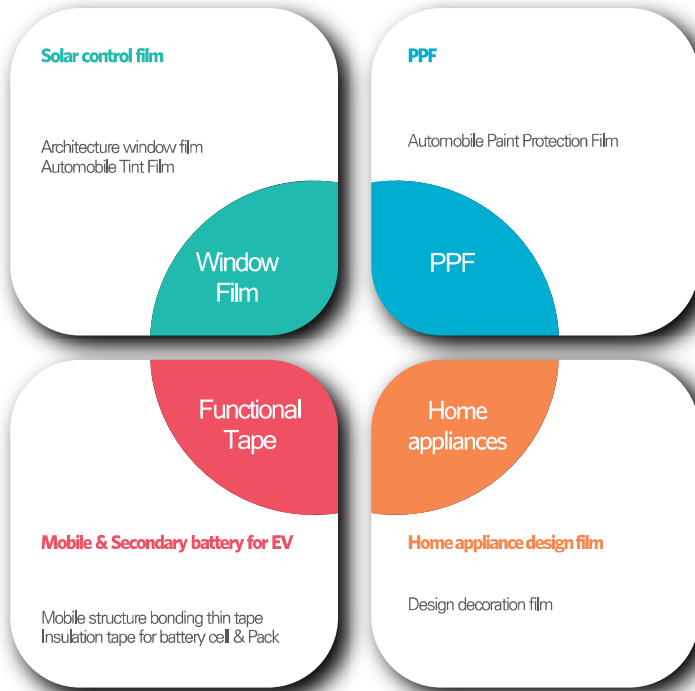
Organization



History



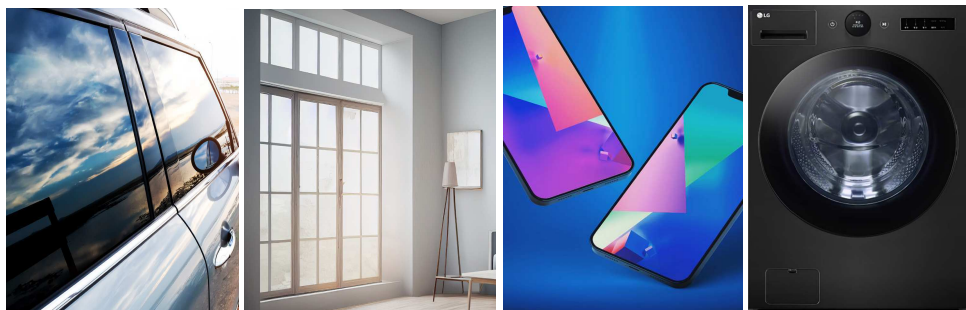
Business Domain



Core competence



R&D



OEM / ODM Service

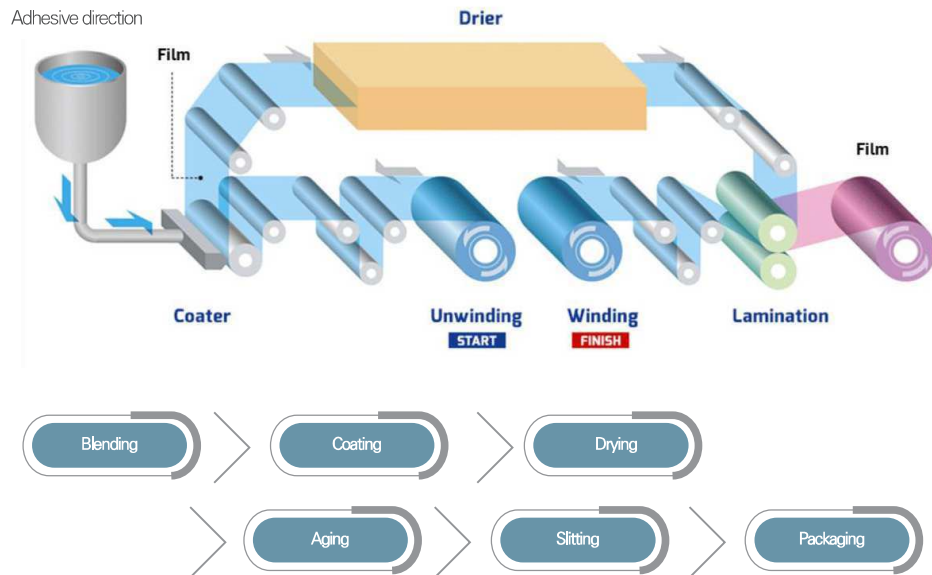
We put our technology into our customers' dreams and make them a reality.

Techpia Co., Ltd. can custom-manufacture the film the customer wants.
All manufacturing methods are possible, including carbon, ceramic, and sputtering.

Top quality film with consistent performance
It can be produced to desired specifications including VLT, IR, and UV.

One-stop production of not only films but also packages with brand logos printed on them.
You can conveniently create your own brand.

Manufacturing process



Facility (Main facilities)



- 2 main coaters, 3 slitters, clean room
- Precision Coater (Slot, M/G, Comma)
- Rewinder

Capa. up to 4,000,000m (100,000 rolls) per Month
- Based on 30m roll (2 Ply Product)



2 main coaters within clean room



Precision Coater (Slot, M/G, Comma)



Rewinder

ISO 9001

Quality Management System Certificate of Registration

TECHPIA CO., LTD.

187, Seongsansandan 1-ro, Geumwang-eup, Eumseong-gun, Chungcheongbuk-do, Korea

ISO 9001:2015 / KS Q ISO 9001:2015

**The Development and Production of optical film protection tape
and multi-functional coating film.**

KCA hereby certifies that the Quality Management System of the above organization has been assessed and found to meet the requirements of the standard and scope of certification detailed above.

Valid Date:28.11.2022.~27.11.2025.
Issue Date:21.11.2022.
Initial Date:28.11.2016.
Certification Number: QC-0001

Moo Sik Kim
President, KCA





KCA(KAB-QC-57) has been accredited by Korea Accreditation Board(KAB) as certification body for quality management system.
KCA is accredited by Member(KAB) of the international accreditation Forum Multilateral Recognition Arrangement for QMS.
06367 No 1913 Rosedale, 280 Gwanggyeong-ro, Gangnam-gu, Seoul, Rep of Korea, Tel. 02445-9081 fax. 02445-9082
www.kcar.or.kr

ISO 14001

Environmental Management System Certificate of Registration

TECHPIA CO., LTD.

187, Seongsansandan 1-ro, Geumwang-eup, Eumseong-gun, Chungcheongbuk-do, Korea

ISO 14001:2015 / KS I ISO 14001:2015

**The Development and Production of optical film protection tape
and multi-functional coating film.**

KCA hereby certifies that the Environmental Management System of the above organization has been assessed and found to meet the requirements of the standard and scope of certification detailed above.

Valid Date:28.11.2022.~27.11.2025.
Issue Date:21.11.2022.
Initial Date:28.11.2016.
Certification Number: EC-0001

Moo Sik Kim
President, KCA





KCA(KAB-EC-50) has been accredited by Korea Accreditation Board(KAB) as certification body for EMS.
KCA is accredited by Member(KAB) of the international accreditation Forum Multilateral Recognition Arrangement for EMS.
06367 No 1913 Rosedale, 280 Gwanggyeong-ro, Gangnam-gu, Seoul, Rep of Korea, Tel. 02445-9081 fax. 02445-9082
www.kcar.or.kr

Nano Ceramic Film

Nano-ceramic film utilizes nano-sized ceramic particles, making a special type of window film.

Allowing for better light transmission while providing effective UV and heat protection, this technology allows the film to maintain an almost transparent appearance while providing significant protection from the sun.



Product Information	Thickness	SOLAR ENERGY			VLT	VLR (Inter.)	VLR (Exter.)
		Transmittance	Absorbance	Reflectance			
T 05	1P1.5M	17	76	7	06	6	7
T 10	1P1.5M	22	71	7	10	6	7
T 30	1P1.5M	38	55	7	30	6	7
T 45	1P1.5M	51	41	8	45	7	9
S 0570	2P1.5M	11	81	8	05	5	8
S 1570	2P1.5M	20	73	7	15	6	7
S 3570	2P1.5M	30	63	8	36	6	8
S 5070	2P1.5M	33	59	8	48	6	9
S 0590	2P1.5M	8	85	7	6	6	7
S 2090	2P1.5M	15	78	7	22	6	8
S 3590	2P1.5M	21	72	8	35	6	9
S 5090	2P1.5M	31	63	6	54	5	7
S 0595	2P1.5M	5	88	8	05	5	8
S 2095	2P1.5M	13	80	7	20	5	8
S 3595	2P1.5M	17	73	8	35	5	8
S 5095	2P1.5M	22	71	7	50	6	8

Product Information	UVR	IRR	TSER	SC	SHGC
T 05	99 Over	73	58	0.48	-
T 10	99 Over	68	54	0.52	-
T 30	99 Over	56	44	0.64	-
T 45	99 Over	47	36	0.73	-
S 0570	99 Over	81	62	0.43	-
S 1570	99 Over	77	56	0.50	-
S 3570	99 Over	77	49	0.58	-
S 5070	99 Over	77	47	0.61	-
S 0590	99 Over	92	64	0.41	-
S 2090	99 Over	92	59	0.47	-
S 3590	99 Over	93	56	0.51	-
S 5090	99 Over	89	48	0.60	-
S 0595	99 Over	96	66	0.39	-
S 2095	99 Over	95	61	0.45	-
S 3595	99 Over	96	58	0.49	-
S 5095	99 Over	96	55	0.53	-

CARBON Film

Carbon window film is a type of window tint film that incorporates carbon particles into its structure, offering enhanced performance and durability.



Product Information	Thickness	SOLAR ENERGY			VLT	VLR (Inter.)	VLR (Exter.)
		Transmittance	Absorbance	Reflectance			
PC 05	2P1.5M	19	73	8	6	5	8
PC 15	2P1.5M	31	61	8	15	6	8
PC 35	2P1.5M	51	42	7	37	7	7
PC 50	2P1.5M	62	29	9	52	8	9
PCBK 05	2P1.5M	28	64	8	7	2	8
PCBK 15	2P1.5M	37	55	8	17	6	8
PCBK 35	2P1.5M	54	37	9	34	7	9
PCBK 50	2P1.5M	67	24	10	54	5	9

Product Information	UVR	IRR	TSER	SC	SHGC
PC 05	99 Over	67	57	0,48	-
PC 15	99 Over	54	49	0,57	-
PC 35	99 Over	36	36	0,72	-
PC 50	99 Over	27	29	0,80	-
PCBK 05	99 Over	52	51	0,55	-
PCBK 15	99 Over	44	45	0,62	-
PCBK 35	99 Over	29	34	0,74	-
PCBK 50	99 Over	22	26	0,83	-

Metalized Film

Metalized window films are window tint films that incorporate metal particles into their composition.

These films are engineered to provide a variety of benefits to the vehicle or building to which they are applied.

They boast an excellent heat-blocking effect based on the principle of reflecting heat coming in from the outside, helping to maintain a comfortable interior temperature.



Product Information	Thickness	SOLAR ENERGY			VLT	VLR (Inter.)	VLR (Exter.)
		Transmittance	Absorbance	Reflectance			
Aurora 10	3P2M	15	51	35	10	16	35
Aurora 30	2P1.5M	35	40	26	30	17	25
NC 20	2P2M	23	50	27	20	24	29
NC 35	2P2M	38	44	18	35	15	19
Raptor 10C	2P1.5M	31	51	18	10	15	17
Raptor 30C	2P1.5M	40	40	20	30	17	19
Raptor 10S	2P2M	11	69	20	10	8	21
Raptor 30S	2P2M	22	58	20	30	15	21

Product Information	UVR	IRR	TSER	SC	SHGC
Aurora 10	99 Over	83	69	0.35	-
Aurora 30	99 Over	64	52	0.54	-
NC 20	99 Over	77	59	0.45	0.40
NC 35	99 Over	63	52	0.59	0.52
Raptor 10C	99 Over	56	52	0.53	-
Raptor 30C	99 Over	55	47	0.60	-
Raptor 10S	99 Over	89	66	0.38	-
Raptor 30S	99 Over	83	59	0.47	-

Dyed Film

Dyed window film enhances the appearance of vehicle or building windows, making it a popular choice for those seeking to add a layer of protection and privacy.



Product Information	Thickness	SOLAR ENERGY			VLT	VLR (Inter.)	VLR (Exter.)
		Transmittance	Absorbance	Reflectance			
WVC 05	1P1.5M	50	41	9	5	8	8
WVC 18	1P1M	55	36	9	18	8	7
WVC 35	1P1M	63	28	9	35	8	8
WVC 50	1P1M	70	21	9	50	9	7
CD-PC 05	1P1M	19	74	7	6	5	7
CD-PC 15	1P1M	31	61	8	15	6	8
CD-PC 35	1P1M	49	44	7	36	7	7
CD-PC 50	1P1M	60	30	9	49	8	9

Product Information	UVR	IRR	TSER	SC	SHGC
WVC 05	99 Over	10	36	0.69	-
WVC 18	99 Over	10	33	0.73	-
WVC 35	99 Over	10	28	0.8	-
WVC 50	99 Over	11	23	0.86	-
CD-PC 05	99 Over	67	56	0.49	-
CD-PC 15	99 Over	59	49	0.57	-
CD-PC 35	99 Over	37	36	0.71	-
CD-PC 50	99 Over	28	30	0.79	-

THP (Low VLR) Film

Low VLR window film stands for "Total Heat Performance Low Visible Light Reflectance" film.

It is engineered to offer effective heat rejection while keeping visible light reflectance at a minimum.

This specialized window film is designed to balance thermal efficiency with maintaining a low level of visible light reflection.



Product Information	Thickness	SOLAR ENERGY			VLT	VLR (Inter.)	VLR (Exter.)
		Transmittance	Absorbance	Reflectance			
DV20	2P2M	28	61	11	21	10	10
DV35	2P2M	37	48	16	35	11	15
Sky 95	2P2M	31	61	9	55	8	10
IR 5095	2P2M	27	64	9	52	7	10
IR 7080	2P3M	42	50	6	72	7	11

Product Information	UVR	IRR	TSER	SC	SHGC
DV20	99 Over	66	52	0.48	0.54
DV35	99 Over	60	47	0.60	0.53
Sky 95	99 Over	92	49	0.59	0.51
IR 5095	99 Over	92	52	0.56	0.48
IR 7080	99 Over	83	42	0.68	0.58

Safety Film

Safety film is a specialized type of window film primarily designed for safety and security purposes.

It finds application in homes, commercial buildings, and vehicles where safety and security are paramount.

This film provides extra protection against potential injuries from accidents, forced entry attempts, and broken glass, prioritizing safety. Moreover, certain safety films offer added advantages like UV and heat protection, contributing to the overall comfort and security of a space.



Product Information	Thickness	SOLAR ENERGY			VLT	VLR (Inter.)	VLR (Exter.)
		Transmittance	Absorbance	Reflectance			
Safety Clear 2Mil	1P2M	87	2	11	89	11	12
Safety Clear 4Mil	1P4M	87	3	9	89	9	10
Safety Clear 7Mil	1P7M	87	3	9	89	9	10

Product Information	UVR	IRR	TSER	SC	SHGC
Safety Clear 2Mil	99 Over	-	-	-	-
Safety Clear 4Mil	99 Over	-	-	-	-
Safety Clear 7Mil	99 Over	-	-	-	-

PPF (Paint Protection Film)

PPF (Paint Protection Film) is a film applied to the exterior paint surface of vehicles. It protects the vehicle paint from external impacts and reduces the need for regular maintenance, thereby preserving the surface of the product for a longer period.

Through a special surface coating layer, it shields the paint surface from stains caused by abrasion and solvents. It also protects the paint surface from chips and road debris while the vehicle is in motion.

Product Information	Color	Thickness (mil)	Gloss_60°	Self-Healing	Adhesion_30min (gf/25mm)	Adhesion_24hr (gf/25mm)	Hydrophobicity	Weathering
Gloss Clear	Transparent	8	Over 86	standard	Over 1500	Over 1700	water repellent	No change (1000hr Xenon Arc Test: 8520W, 0.67 W/m ² (340nm), 65°C, 50% R.H.)
Gloss Clear H	Transparent	8	Over 86	standard	Over 1500	Over 1700	Super Hydrophobic	No change (1000hr Xenon Arc Test: 8520W, 0.67 W/m ² (340nm), 65°C, 50% R.H.)
Matte Clear	Transparent	8	Over 11	standard	Over 1500	Over 1700	water repellent	No change (1000hr Xenon Arc Test: 8820W, 0.07 W/m ² (340nm), 65°C, 50% R.H.)
Gloss Black	Black	8	Over 06	standard	Over 1500	Over 1700	water repellent	No change (1000hr Xenon Arc Test: 8520W, 0.07 W/m ² (340nm), 65°C, 50% R.H.)
Matte Black	Black	8	Over 11	standard	Over 1500	Over 1700	water repellent	No change (1000hr Xenon Arc Test: 8520W, 0.57 W/m ² (340nm), 65°C, 50% R.H.)



Design Decoration Film

Decoration film is a film that enhances the exterior design of home appliances such as refrigerators and washing machines.

It beautifully and elegantly reveals the surface texture and color of home appliances, especially in the manufacturing of Vinyl Coated Metal (VCM) colored steel sheets.

Decoration film allows customers to implement various external colors according to their preferences.

Additionally, coating the film surface with special coatings enhances durability against external impacts. Moreover, it maintains the product's quality for an extended period with colors that do not change.



Functional Tape

TECHPIA's functional films are used in everyday items such as mobile devices and secondary batteries, making our daily lives more convenient.

Functional films used in mobile devices like smartphones are very thin adhesive films used for structural bonding.

They offer a variety of thicknesses, adhesion strengths, and colors to provide functions such as mobile device component fixation, insulation, and thickness gap correction.



Product Information	Color	Structure	Thickness	Peel Strength
HPDT-S0405	Transparent	One side	5	Over 400gf/in.
HPDT-S0510	Transparent	One side	10	Over 400gf/in.
HPDT-S1215	Transparent	One side	15	Over 600gf/in.
HPDT-S1220	Transparent	One side	20	Over 800gf/in.
HPDT-S1030	Transparent	One side	30	Over 1,000gf/in.
HPDT-S2550	Transparent	One side	50	Over 1,300gf/in.
HPDT-S0405W	White	One side	5	Over 400gf/in.
HPDT-S0510W	White	One side	10	Over 400gf/in.
HPDT-S1220W	White	One side	20	Over 400gf/in.
HPDT-S1230W	White	One side	30	Over 800gf/in.
HPDT-S2550W	White	One side	50	Over 1,300gf/in.
HPDT-S75100W	White	One side	100	Over 2,200gf/in.
HPDT-S125150W	White	One side	150	Over 2,000gf/in.
HPDT-S0105B	Black	One side	5	Over 300gf/in.
HPDT-S0510B	Black	One side	10	Over 400gf/in.
HPDT-S1220B	Black	One side	20	Over 400gf/in.
HPDT-S1230B	Black	One side	30	Over 800gf/in.
HPDT-S2550B	Black	One side	50	Over 1,300gf/in.
HPDT-D0510B	Black	Double side	10	Over 600gf/in.
HPDT-D0103	Transparent	Double side	3	Over 300gf/in.
HPDT-D0305	Transparent	Double side	5	Over 600gf/in.
HPDT-D0310	Transparent	Double side	10	Over 800gf/in.
HPDT-D0515	Transparent	Double side	15	Over 900gf/in.
HPDT-D0420	Transparent	Double side	20	Over 1,100gf/in.
HPDT-D1030	Transparent	Double side	30	Over 1,600gf/in.



TECHPIA

Techpia Global 187, Seongbonsandan 1-ro, Geumwang-eup, Eumseong-gun,

Chungcheongbuk-do, Republic of Korea [27741]

Tel : +82-43-845-6325 Fax : +82-43-845-6329

www.techpiads.com

Email : sales@techpiads.com